

4. The REQUIREMENTS FOR DIRECTORS be observed.

## RULES OF CONDUCT

1. No interference with Camp property.
2. No cigarettes, alcohol or drugs allowed on the property.
3. No kicking of balls inside the buildings.
4. Vehicles are not to be driven around the property except to service the cabins.
5. Keep within the Camp boundaries, unless specific permission is obtained from neighbouring farmers.

## REQUIREMENTS FOR DIRECTORS

1. There must be a minimum of one responsible adult sleeping in each bedroom with children and young-people. We insist on adequate supervision for care of the facilities, and safety in case of emergency.
2. Camp Director must be familiar with fire equipment and notify campers at the earliest opportunity of safety information which will be supplied on arrival.
3. Camp buildings and grounds are to be left clean and tidy on vacating. Please follow cleaning instructions on notices and on your Report Sheet.
4. All losses, breakages and damage are to be reported on the Report Sheet to enable maintenance to be done.

## PROVISIONS

**CLEANING:** Detergents, disinfectants, toilet rolls and cleaning equipment are supplied.

**GROCERIES:** As the Camp is normally hired out on a "buildings only" basis; you must make your own arrangements for ordering supplies.

**CATERING:** It may be possible for the Camp management to arrange catering for you. Please enquire about this if you wish.

## OTHER INFORMATION

**DOCTOR:** Lakes Prime Care, cnr Arawa & Tutanekai St, Rotorua, ph. 348 1000.

**RUBBISH:** Rubbish Drums in carpark.

**MAINTENANCE:** In the event of a problem that needs

immediate attention contact the person you receive the key from.

### LOST PROPERTY:

Mrs R. Bradford,  
7 Operiana Street,  
Ngongotaha,  
Rotorua 3010  
Ph: 07- 343 1011  
Email: lakeview@biblecamp.org.nz

### FINDING LAKEVIEW BIBLE CAMP

From HAMILTON: Turn left at Ngongotaha and travel 4km around North side of Lake Rotorua on Hamurana Rd.



From TAURANGA/WHAKATANE: Turn at Ohau Channel (Mourea) and travel along the north edge of Lake Rotorua. Camp is 1km past Tauranga Direct Rd (Pyes Pa/Kaharoa Rd).

From TAUPO/ROTORUA: Travel north through Ngongotaha and continue 4km on Hamurana Rd.

### LAKEVIEW BIBLE CAMP

c/- Mrs R. Bradford,  
7 Operiana St,  
Ngongotaha, Rotorua 3010  
Ph/fax: 07- 343 1011

lakeview@biblecamp.org.nz

## Information Brochure

# Lakeview Bible Camp



**Lakeview Bible Camp** is a quality Camp facility suitable for groups up to 120 in number. The excellent location, amid farmland and overlooking Lake Rotorua makes it ideal for both Youth Camps and quiet Retreats.



The Property is close to the Hamurana recreation area, suitable for swimming and lakeside recreation. It is only 15 minutes drive into central Rotorua, with all the tourist attractions that New Zealand's No.1 Tourist City

has to offer. The added advantages of the Whakarewarewa Forest with its many walks, and the pleasures of the many lakes in the district make this facility an attractive choice for groups wishing to camp together and also have a range of outdoor options available to them.

The modern buildings, and cabin layout, provide comfortable amenities for all age-groups. A large children's play area, safely constructed, includes climbing equipment, 2 trampolines and a "Pipehenge" frame that can be used for astronomy.



## FACILITIES

**BEDDING** Mattresses and pillows are provided. **Pillowcases and a sheet for a mattress cover must be brought and used by all campers.** It is up to Hirers to ensure that Camp pillows are not used without pillowcases.



**KITCHEN:** Freezer and walk-in coolstore. Plates, cutlery, cups supplied. Electric ovens and gas hobs. All cooking utensils supplied. Electric toasters. Teatowels and detergents provided. Commercial dishwasher. Potato peeler machine in laundry.

**DINING HALL:** Seats approx. 120 with moveable tables, carpeted, electric heating. Excellent views across farmland and Lake Rotorua.

**MAIN HALL:** Seating for approx. 200. Raised speakers platform and P.A. system. Overhead projector available. Piano. Electric heating, carpeted. Suitable for meetings and games.

**LAUNDRIES:** The main complex has a washing machine and dryer to be used by kitchen staff only, for associated kitchen washing. Other washing machines and irons are available in Matthew and The Lodge.

## ACCOMMODATION UNITS

**MATTHEW** 2 bedrooms, sleeping 8 and 6. Small bedroom with double bed. Large lounge, kitchen, bathroom with 2 showers & 2 toilets.

**PAUL** 6 bedrooms sleeping up to 4 each. Men's & women's bathrooms containing showers, basins and toilets. Disabled toilet & shower.

**MARK** 2 bedrooms sleep 10 and 14, 2 showers, 2 toilets.

**LUKE** 3 bedrooms sleeping 22 total. Bathroom, 2 showers, 2 toilets.

**JOHN** 2 bedrooms sleeping 6 each. Double bed in lounge/kitchen. Kitchen facilities, 2 Showers, 2 toilets, bathroom.



**THE LODGE** 2 bedroom wings with large centre lounge with kitchen. 8 rooms sleeping 15 in one wing, with disabled bathroom, laundry, showers & toilets. Other wing has 4 rooms sleeping 2 or 3 each, a single room plus male & female bathrooms.

**PLAYGROUNDS** 2 trampolines, climbing frames, "Pipehenge" frame (usable as an astronomical observatory).

**BUSES:** Driveway is not suitable for large buses which need be parked at the bottom of the driveway.

## FEES (including GST)

All fees are calculated on a per person per night basis.

### Group Bookings:

Main Complex and Cabins: 5yrs old and over... ..	\$20
Pre-schoolers	\$ 5
Main Complex and The Lodge ( <i>adult groups only</i> )	\$24
Day visitors ... ..	\$ 5
Surcharge for weekend one night bookings... ..	\$ 5
Minimum Charge:	\$400 per booking (main complex)
Deposit: ( <i>non-refundable</i> )	\$300.

### Small Group/Family Bookings: (2 x self-contained cabins available)

Cabins .(per person)... ..	\$20
Pre-schoolers	\$ 5
Minimum Charge:	\$70 per night per cabin
Deposit: ( <i>non-refundable</i> )	\$70

## BOOKING POLICY

1. All bookings are subject to the approval of the Board. We reserve the right to decline any booking.
2. Deposit must be paid for any booking to be confirmed.
3. Please read carefully the following **BASIS OF HIRE** section and consider an honest response to this. We ask that you do not seek a booking if you are unable to comply.
4. Advance Bookings can be made at any time but we may not be able to confirm some periods immediately because of priority usage.

## BASIS OF HIRE

### a) SCHOOL & COMMUNITY GROUPS

1. The RULES OF CONDUCT be strictly maintained and leaders and campers be informed of them.

2. The REQUIREMENTS FOR DIRECTORS be observed.
3. Because of the underlying purposes for which the Camp was established

### EITHER

(i) Provision be made for a minimum of 15 minutes Bible-related input per day (or equivalent total time), by a member of your staff as agreed to by the Camp Management.

### OR

(ii) Provision be made for the Camp Management to arrange Bible-related input for your group, at a time and in a style mutually suitable. This could include games, stories, films, or lessons depending on your group composition.

### b) CHRISTIAN GROUPS

1. The following teachings must be held as true by the Camp leadership:
  - (i) The divine inspiration of the Old and New Testaments as the inerrant Word of God. This is the sole authority for faith and practice.
  - (ii) God the Father, the Son (Jesus Christ), and the Holy Spirit are equally and fully members of the one Godhead.
  - (iii) The virgin birth of the Lord Jesus Christ, his death as the only sacrifice for sin, his bodily resurrection and ascension, his present work as Head of the Church, his imminent return for his saints, his return to rule in righteousness & glory.
  - (iv) All men are born in sin, salvation is by faith in Christ alone, no-one can earn their salvation.
  - (v) The permanent indwelling of the Holy Spirit in all believers, the guarantee of eternal salvation.
2. That while at Camp the public **encouragement** and **promotion** of "sign gifts" (speaking in tongues, miracles, discerning of spirits) be refrained from. (*We do not seek to forbid what some believe to be a normal part of their worship but do wish to dissociate ourselves from extreme teachings and practices*).
3. The RULES OF CONDUCT be maintained and campers informed of them.

# BOOKING FORM

Booking enquiries to:  
Mrs R. Bradford  
7 Operiana St,  
Ngongotaha  
ROTORUA 3010  
Ph/fax: 07- 343 1011  
lakeview@biblecamp.org.nz

After checking that the date you require is available please complete this Form and return it with your deposit of \$300. This deposit is non-refundable if you cancel your booking after having had it confirmed.

NAME OF GROUP: \_\_\_\_\_

DATES of CAMP: \_\_\_\_\_

Expected arrival time: \_\_\_\_\_

Expected departure time: \_\_\_\_\_

CAMP ORGANISER (for correspondence etc.)

NAME:  
ADDRESS:

PHONE: \_\_\_\_\_ EMAIL: \_\_\_\_\_

TYPE of CAMP  
(expected numbers, age-group, purpose..)

FACILITIES YOU PREFER: (tick)

☐ MAIN COMPLEX (Hall/Dining/Kitchen)

☐ MATTHEW ☐ PAUL ☐ MARK  
☐ LUKE ☐ JOHN ☐ LODGE

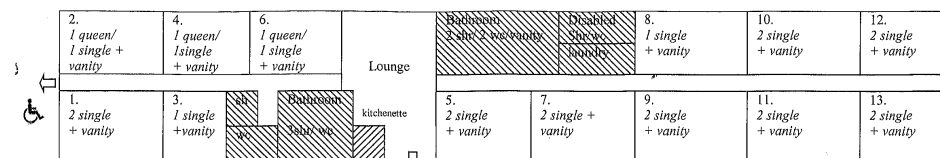
Do you agree to the BASIS OF HIRE? Yes/No

DEPOSIT ENCLOSED: \$ \_\_\_\_\_ (non-refundable)

Signed: \_\_\_\_\_

Please note our driveway is not suitable for large buses (over 30 seat).  
They need to be parked on the roadside at the bottom of the drive.

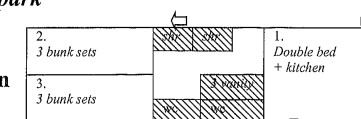
## LAKEVIEW BIBLE CAMP – Accommodation Layout (not to scale)



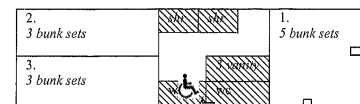
Lodge

### Carpark

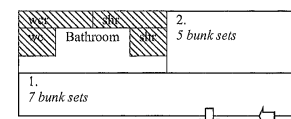
John



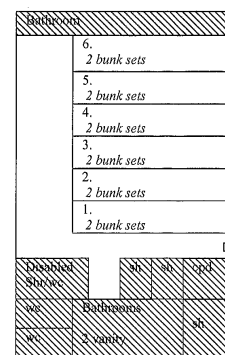
Luke



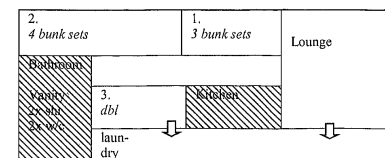
Mark



Paul



Matthew



Main Hall

Disabled  
Toilet  
wc  
Disabled  
wc  
Foyer

Store  
Laundry  
Freezer  
Washup

Kitchen  
Dining Room

Books  
Office  
Chiller

driveway

please note driveway is  
not suitable for large buses  
over about 30 seats or 14 tonne